

INNOVATION IN HEALTH CARE

Our Journey in Developing a Motivational Device for Rehabilitating Orthopaedic Patients



Helena Miles



BACKGROUND

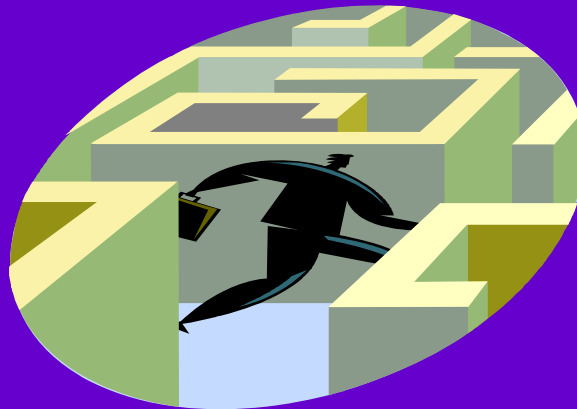
- ❖ Acute Hospital Trust
- ❖ 14 orthopaedic consultants
- ❖ 2 elective orthopaedic wards
- ❖ 1 trauma ward
- ❖ 20 joint replacement patients per week

PATIENT PATHWAY

- ❖ Nurse led pre-assessment
- ❖ Admission on the day of surgery
- ❖ Mobilise first day after surgery
- ❖ Progression
- ❖ 2 physiotherapy contact sessions per day
- ❖ Multi-disciplinary discharge
- ❖ Average length of stay 6 days

START OF THE JOURNEY

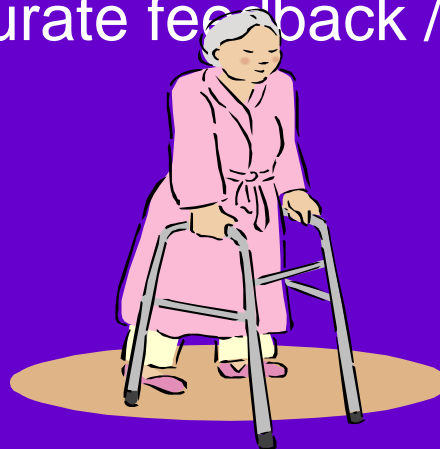
- ❖ Meeting with Business Development Manager (WRHIP)
- ❖ Informal discussion with colleagues
- ❖ Participation / presentation at an Open Innovation Workshop



THE PROJECT

To develop a device that will

- ❖ Work with the mobility aid currently used
- ❖ Be used in the first 2–3 days after surgery
- ❖ Motivate patients to achieve / surpass physiotherapy goals
- ❖ Provide accurate feedback / data for clinical staff



GETTING THE RIGHT PEOPLE INVOLVED

- ❖ The initial team
 - ❖ White Rose Health Innovation Partnership
 - ❖ University of Bradford
 - ❖ Medipex
 - ❖ Bradford Teaching Hospitals



MILESTONES

- ❖ Idea and Interest
- ❖ Submission of application to WRHIP (Proof of Concept funding)
- ❖ Funding awarded
- ❖ Define / finalise design

REST OF THE JOURNEY

- ❖ Finalise the prototype
- ❖ Test with patient involvement
- ❖ Market 'Bradford Smart Walker'



THANK YOU